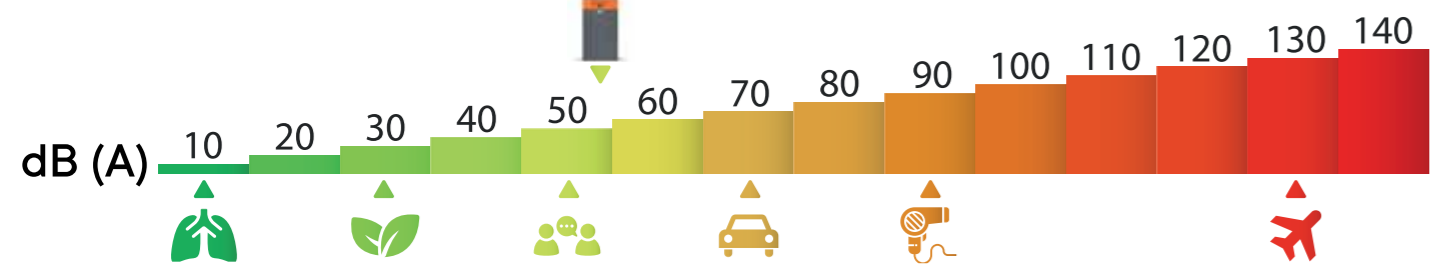
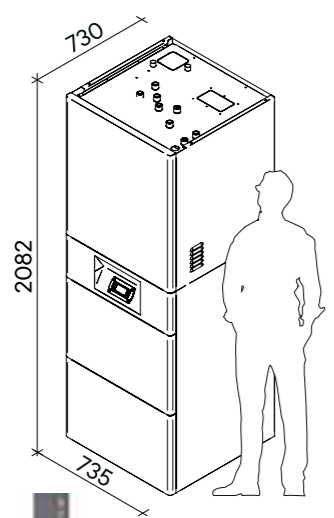




**AQUA TOWER**

		107	111	107	111
		Sorgente Geotermica B0		Sorgente Geotermica W10	
<b>Heating Conditions – UNI EN 14511</b>					
Heating Capacity W35	kW	6,03	10,6	6,72	10,98
COP W35		4,3	4,31	5,24	5,37
Heating Capacity W45	kW	5,79	10,2	6,39	10,45
COP W45		3,49	3,56	4,16	4,34
Heating Capacity W55	kW	5,52	9,6	6,01	9,78
COP W55		2,76	2,83	3,23	3,38
<b>Cooling Capacity - UNI EN 14511</b>					
Cooling Capacity W7	kW	7,26	12,2	7,26	12,2
EER W7		5,2	5,1	5,2	5,1
Cooling Capacity W18	kW	10,5	15,2	10,5	17,8
EER W18		7,12	7,2	7,12	6,6
<b>Low Temperature Conditions – UNI EN 14825</b>					
SCOP		5,53	5,59	7,79	7,6
SEER		7,2	6,8	7,2	6,8
Energy Label		A+++	A+++	A+++	A+++
<b>General Data</b>					
Power Supply		Monofase	Mono - Trifase	Monofase	Mono - Trifase
Refrigerant		R454C	R454C	R454C	R454C
Maximum Power Input	kW	2,9	4	2,9	4
Compressor		1 x Scroll Low Sound BLDC - Modulazione 20 - 100%			
Outdoor Unit Sound Power Level	dB (A)	56	58	56	58
Integrated DHW storage tan	liters	250	250	250	250
Weight	kg	275	275	275	275



AQUA TOWER 454C

MK-DPCAOTW454002  
DC.260430



# TOWER aqua

Geothermal heat pumps for residential buildings



Via dell'Artigianato, 44 - 31047  
Ponte di Piave (TV)  
Tel: 0422 289828  
info@gsicontrol.it  
www.gsicontrol.it

G.S.I. srl assumes no responsibility for any errors contained in this brochure and reserves the right to modify the specifications of its products without prior notice.



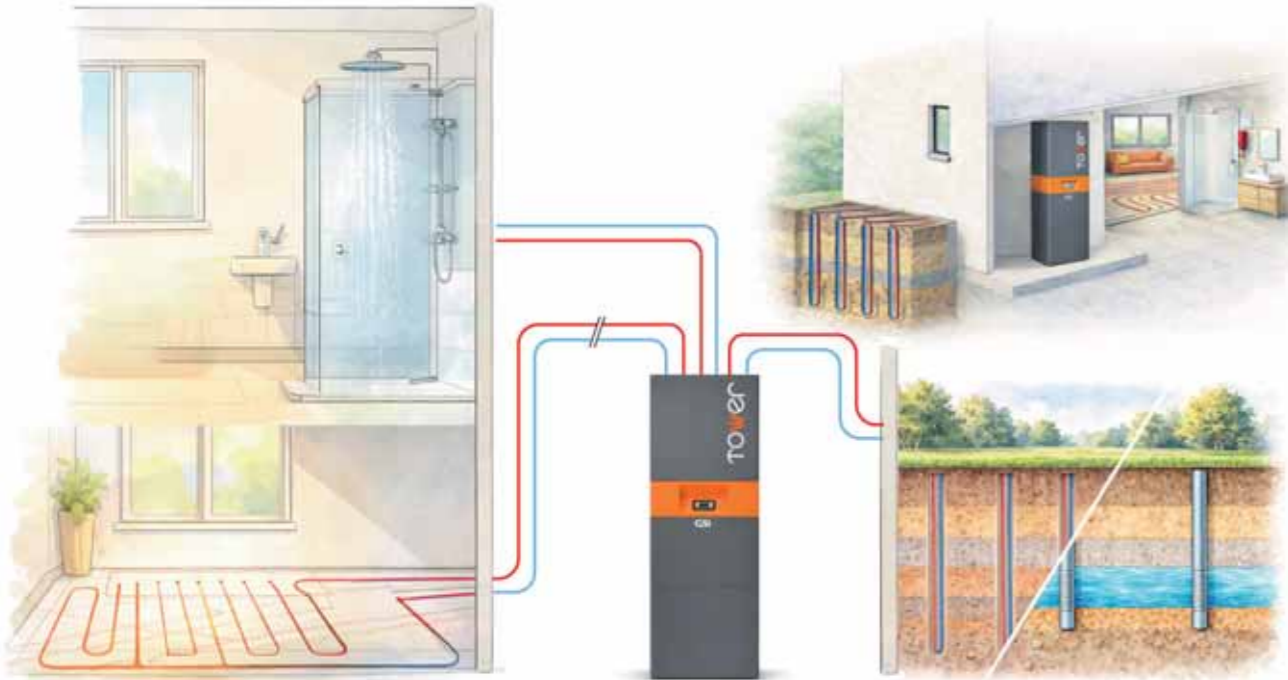


## ALL THE COMFORT IN A SINGLE SOLUTION

TOWER AQUA is a reversible full inverter geothermal heat pump designed for residential applications and small commercial spaces requiring high performance and maximum efficiency within compact dimensions. It integrates a complete plant room and a 250-liter domestic hot water tank into a single compact system, eliminating the need for external components and simplifying both installation and system design.

Engineered to operate with geothermal probes or groundwater systems, it can function either as a standalone unit or in cascade configuration, ensuring continuity and flexibility across different plant layouts. The system provides heating, cooling, and domestic hot water production directly within the unit, with intelligent cycle management to optimize energy consumption and guarantee constant availability.

The use of R454C refrigerant enables high performance with reduced environmental impact, in compliance with the latest regulatory requirements. Designed and manufactured in Italy, with in-house developed electronics and software, TOWER AQUA is a compact, efficient, and all-in-one solution, conceived to deliver year-round comfort.



### GEOTHERMAL TECHNOLOGY

It exploits the thermal stability of the ground to ensure constant performance and high efficiency, independent of external climatic conditions, guaranteeing reliable comfort in every season.

### HIGH EFFICIENCY IN COLD CONDITIONS

The unit uses R454C refrigerant (GWP146), combining high performance with low environmental impact. Designed for residential buildings and small commercial applications.

### SIMPLIFIED INSTALLATION

The internal layout and optimized connections reduce installation time, simplify hydraulic and electrical connections, and facilitate commissioning and maintenance operations.

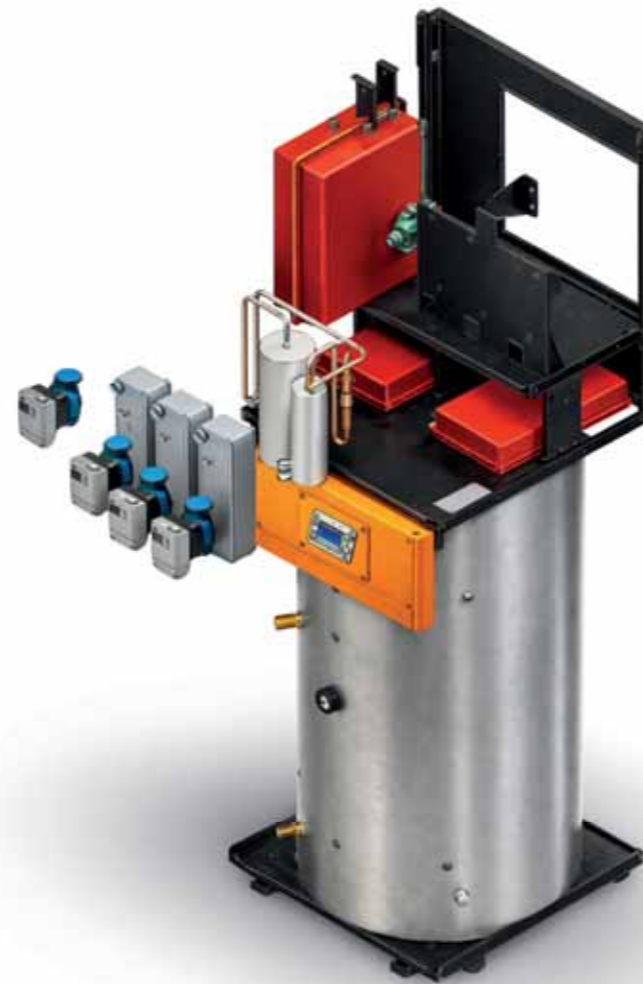


www.gsicontrol.it



## INTEGRATED DOMESTIC HOT WATER AND MAXIMUM EFFICIENCY WITH MAGIS

With MAGIS, the exclusive GSI system, heat that is normally dissipated by the heat pump is automatically recovered—without waste—to produce domestic hot water up to 70°C. In TOWER AQUA units, this process takes place directly within the integrated 250-liter domestic hot water tank, which is heated while the system is operating for space heating or cooling. This allows you to produce domestic hot water with no additional energy consumption, making full use of the energy already available. The result is a constant availability of hot water, intelligent management of DHW cycles, and lower energy bills—without compromising comfort.



### COMPACT YET COMPLETE

Compact and fully equipped, it integrates all the main hydronic components of the plant room—including pumps, valves, expansion vessels, and accessories—along with a built-in 250-liter domestic hot water tank, enabling direct connection to the HVAC system.

Designed for indoor installation, it is also ideal for small technical rooms, allowing the creation of a clean, efficient, and ready-to-use plant room within a single compact system.

### FULL INVERTER

Full inverter compressor with modulating heating and cooling capacity from 6 to 16 kW, adapting performance to actual demand and ensuring optimal indoor conditions, high efficiency and reduced energy consumption under all operating conditions.

### PERFECT FOR RETROFIT

AQUA TOWER is an indoor heat pump designed for the replacement of existing generators without system modifications. It integrates easily into existing plant rooms while maintaining the existing hydraulic distribution, terminals and connections. An ideal solution for renovation projects requiring efficiency and modernization without invasive structural interventions.



www.gsicontrol.it

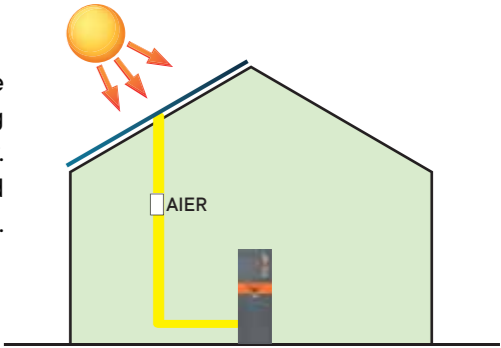
## CASCADE MANAGEMENT, SCALABLE POWER

Up to 6 GSI heat pumps can be managed in cascade via a dedicated controller with specific control logic. The controller supervises the system and automatically modulates the units according to the required load, ensuring unit rotation. Coordinated cascade management ensures service continuity, reliability, and high energy efficiency even in large installations.



## ADVANCED CONTROL, INTELLIGENT MANAGEMENT

GSI heat pumps are prepared for remote management and supervision. The GSI CLOUD platform stores up to 13 months of operating data, enabling analysis, diagnostics, and system optimization to support service continuity. AIER, the optional network analyzer, detects surplus energy in real time and automatically adjusts the heat pump by increasing setpoints for DHW or heating.



## COMFORT AT YOUR FINGERTIPS

The product **web app**, paired with **GSI's KlySense app**, enables clear and intuitive monitoring and control of the system from a computer, tablet, or smartphone. An end-user menu covers everyday comfort, while a password-protected service menu provides advanced parameters for configuration and technical management.

A guided start-up wizard supports installation and commissioning step by step, reducing start-up time and limiting errors. End users can set up to three heating and cooling levels (comfort, pre-comfort, and economy). DHW time bands and setpoints can be managed in the same way.

## EXPLORE THE FULL RANGE AND FIND THE SOLUTION THAT FITS YOUR NEEDS



**AQUA SLIM 454C**  
Residential geothermal systems for consistent, year-round indoor comfort.



**MEVO SMART**  
The compact all-in-one system for space conditioning and domestic hot water.



www.gsicontrol.it