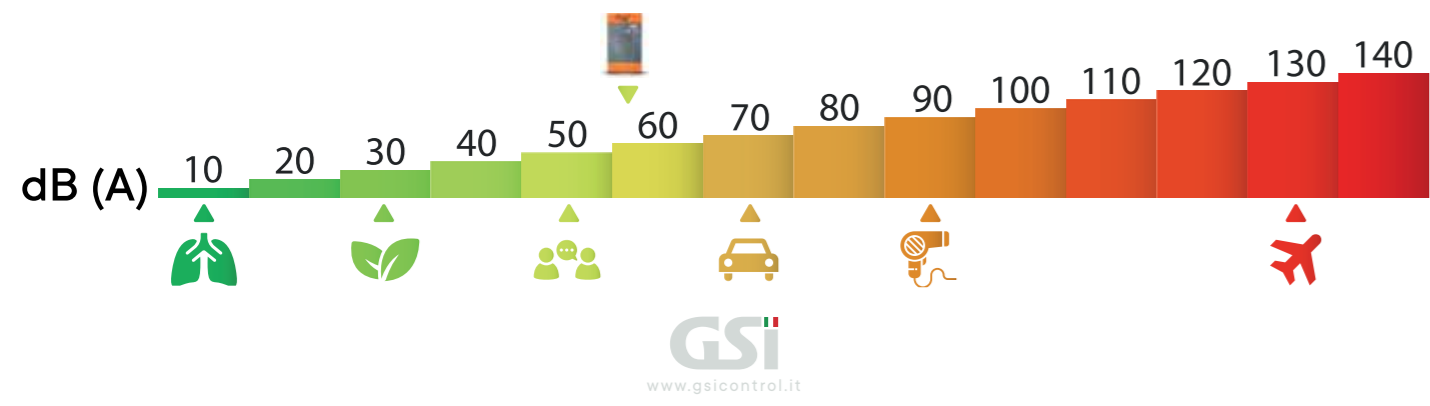
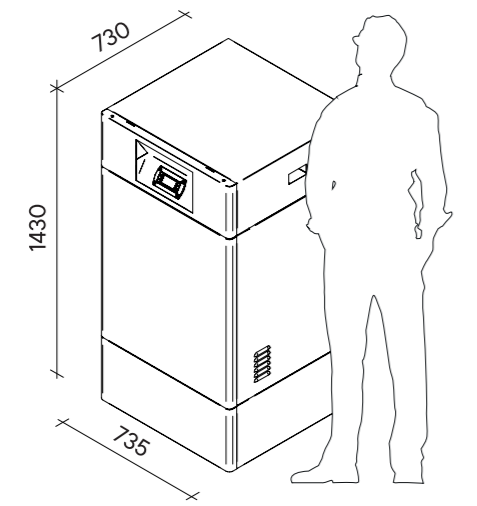




MK-DPCAQSL454002
DC.260430



AQUA		107	111	107	111
		Sorgente Geotermica B0		Sorgente Geotermica W10	
Heating Conditions – UNI EN 14511					
Heating Capacity W35	kW	6,03	10,6	6,72	10,98
COP W35		4,3	4,31	5,24	5,37
Heating Capacity W45	kW	5,79	10,2	6,39	10,45
COP W45		3,49	3,56	4,16	4,34
Heating Capacity W55	kW	5,52	9,6	6,01	9,78
COP W55		2,76	2,83	3,23	3,38
		Sorgente Geotermica W20		Sorgente Geotermica W20	
Cooling Capacity - UNI EN 14511					
Cooling Capacity W7	kW	7,26	12,2	7,26	12,2
EER W7		5,2	5,1	5,2	5,1
Cooling Capacity W18	kW	10,5	15,2	10,5	17,8
EER W18		7,12	7,2	7,12	6,6
Low Temperature Conditions – UNI EN 14825					
SCOP		5,53	5,59	7,79	7,6
SEER		7,2	6,8	7,2	6,8
Energy Label		A+++	A+++	A+++	A+++
General Data					
Power Supply		Monofase	Mono - Trifase	Monofase	Mono - Trifase
Refrigerant		R454C	R454C	R454C	R454C
Maximum Power Input	kW	2,9	4	2,9	4
Compressor		1 x Scroll Low Sound BLDC - Modulazione 20 - 100%			
Outdoor Unit Sound Power Level	dB (A)	56	58	56	58
Weight	kg	214	214	214	214



Geothermal heat pumps for residential buildings



Via dell'Artigianato, 44 - 31047
Ponte di Piave (TV)
Tel: 0422 289828
info@gsicontrol.it
www.gsicontrol.it

G.S.I. srl assumes no responsibility for any errors contained in this brochure and reserves the right to modify the specifications of its products without prior notice.





COMPACT IN SIZE, COMPLETE IN PERFORMANCE

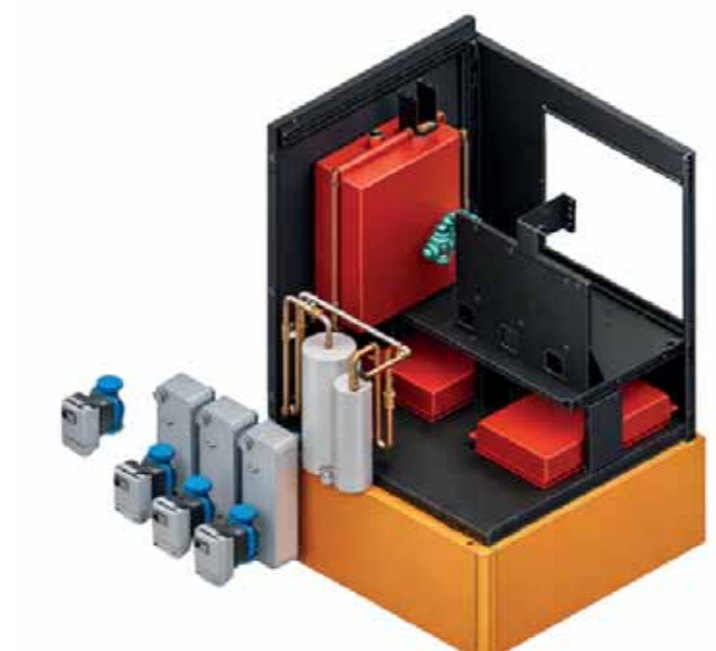
AQUA SLIM is a reversible full inverter geothermal heat pump designed for residential applications and small commercial spaces requiring high performance, compact dimensions and maximum energy efficiency. Compact yet fully equipped with all the necessary accessories, AQUA SLIM has been designed to operate with geothermal probes or groundwater, both as a single unit or in cascade configuration. The system provides heating, cooling and, when configured with MAGIS technology, domestic hot water production through compressor heat recovery. The integration of the main hydronic and control components within a single structure simplifies installation and enables precise management of operating parameters, optimizing energy consumption and comfort throughout the year.

The use of the next-generation refrigerant R454C allows the system to combine high performance with low environmental impact. Designed and manufactured in Italy, with electronics and software developed in-house, AQUA SLIM represents a robust, efficient solution ready to meet the latest regulatory and energy requirements.



DOMESTIC HOT WATER AND LOWER ENERGY BILLS WITH MAGIS

With MAGIS, GSI's exclusive system, heat normally dissipated by the heat pump is recovered to produce DHW up to **70°C automatically** and without waste. While the system heats or cools the building, MAGIS **simultaneously heats the DHW storage**, boosting efficiency and reducing energy bills without compromising comfort.



COMPACT BUT COMPLETE

Fully equipped, the unit integrates the main hydronic components of the plant room, such as pumps, valves, expansion vessels, and other accessories, allowing direct connection to the HVAC system while reducing installation time, space requirements, and system complexity. Designed for indoor installation, it is also ideal for small technical rooms, enabling a tidy and efficient plant room without the need for large dedicated spaces. An advanced solution concentrated in a single compact unit.

FULL INVERTER

With modulating heating and cooling capacity and two available thermal power versions, 6 kW and 11 kW, the unit adapts performance to actual demand, ensuring optimal indoor conditions, high efficiency, and reduced energy consumption under all operating conditions.

PERFECT FOR RETROFIT

Designed for indoor installation, the unit is ideal for replacing existing generators and heat pumps without major system modifications. It integrates easily into existing plant rooms while maintaining the current hydraulic distribution, terminals, and connections. The use of R454C also supports modernization with a reduced environmental impact, offering a balanced solution for retrofit applications where efficiency, integration, and controlled refrigerant risk are key requirements.

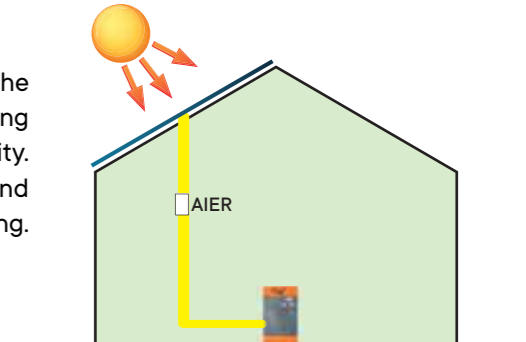
CASCADE MANAGEMENT, SCALABLE POWER

Up to 6 GSI heat pumps can be managed in cascade via a dedicated controller with specific control logic. The controller supervises the system and automatically modulates the units according to the required load, ensuring unit rotation. Coordinated cascade management ensures service continuity, reliability, and high energy efficiency even in large installations.



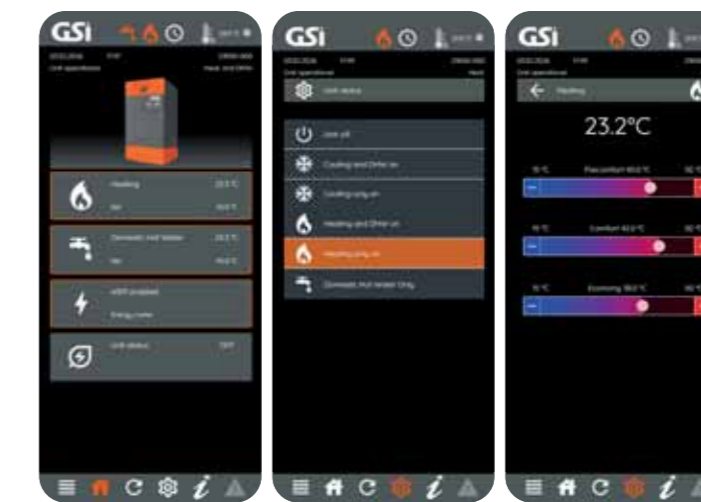
ADVANCED CONTROL, INTELLIGENT MANAGEMENT

GSI heat pumps are prepared for remote management and supervision. The GSI CLOUD platform stores up to 13 months of operating data, enabling analysis, diagnostics, and system optimization to support service continuity. AIER, the optional network analyzer, detects surplus energy in real time and automatically adjusts the heat pump by increasing setpoints for DHW or heating.



COMFORT AT YOUR FINGERTIPS

The product **web app**, paired with **GSI's KlySense app**, enables clear and intuitive monitoring and control of the system from a computer, tablet, or smartphone. An end-user menu covers everyday comfort, while a password-protected service menu provides advanced parameters for configuration and technical management. A guided start-up wizard supports installation and commissioning step by step, reducing start-up time and limiting errors. End users can set up to three heating and cooling levels (comfort, pre-comfort, and economy). DHW time bands and setpoints can be managed in the same way.



EXPLORE THE FULL RANGE AND FIND THE SOLUTION THAT FITS YOUR NEEDS



MEVO SMART
The compact all-in-one system for space conditioning and domestic hot water.



MEVO Magis
Simultaneous heating and DHW, no system modification.

GEOTHERMAL EFFICIENCY

Constant capacity and high seasonal efficiency, independent of outdoor climatic conditions. Suitable for installation with boreholes or brine water source systems.

HIGH EFFICIENCY IN COLD CONDITIONS

The unit uses R454C refrigerant (GWP146), combining high performance with low environmental impact. Designed for residential buildings and small commercial applications.

SIMPLIFIED INSTALLATION

The optimized internal layout and connection design reduce installation time, simplify hydraulic and electrical connections, and facilitate commissioning and maintenance.